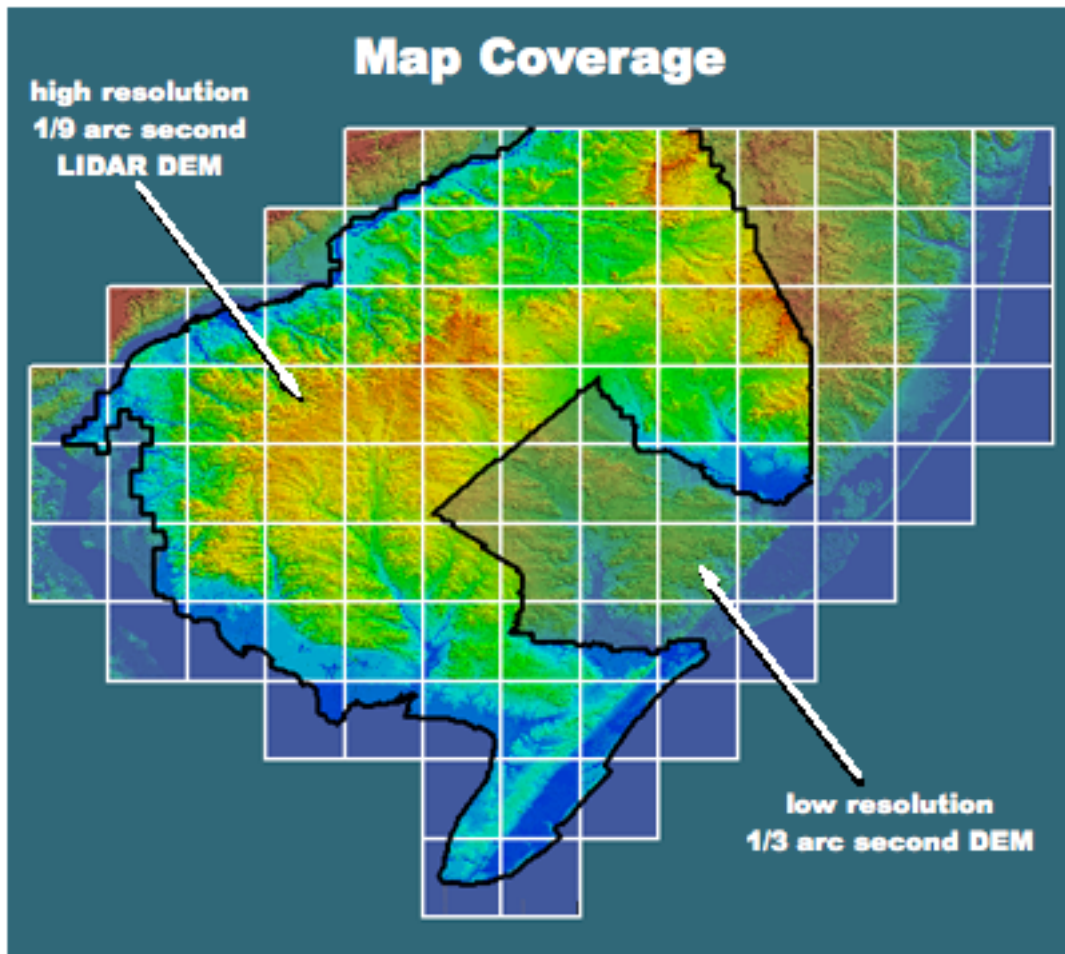


Boyd's Map of the Pines / LIDAR Edition

Version 1.0, January 29, 2012

This map provides colorful and highly detailed shaded terrain for the southern half of New Jersey (total of 87 USGS 24k quads) based on USGS National Elevation Dataset 1/9 arc second LIDAR DEM. It is compatible with all Garmin mapping GPS receivers as well as Garmin desktop software on both the Macintosh and Windows.

To make this map compatible with all Garmin devices and software, the original imagery was converted to Garmin's vector format at reduced resolution using special techniques and software developed by the author. Although all of Southern New Jersey is covered, please note that LIDAR data was only available for a portion of the area. You will notice a significant lack of detail outside the LIDAR coverage.

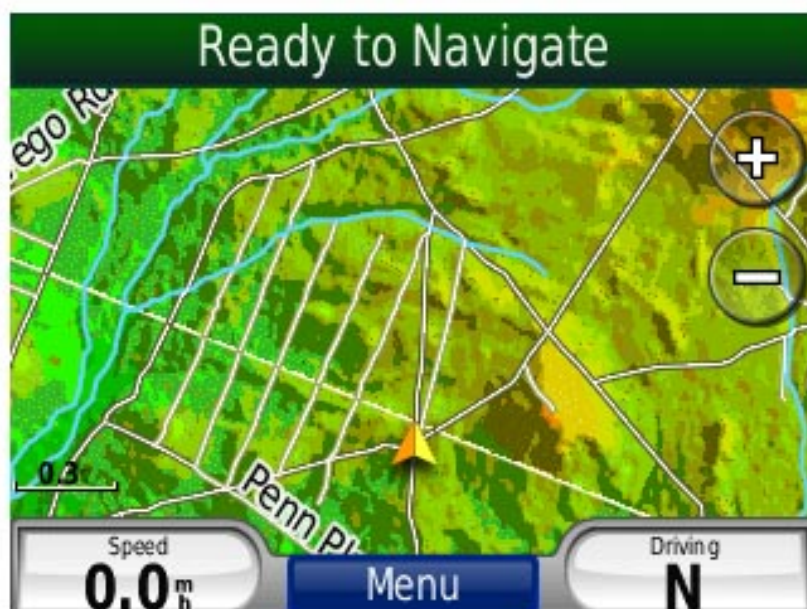




nuvi 3790



montana 600



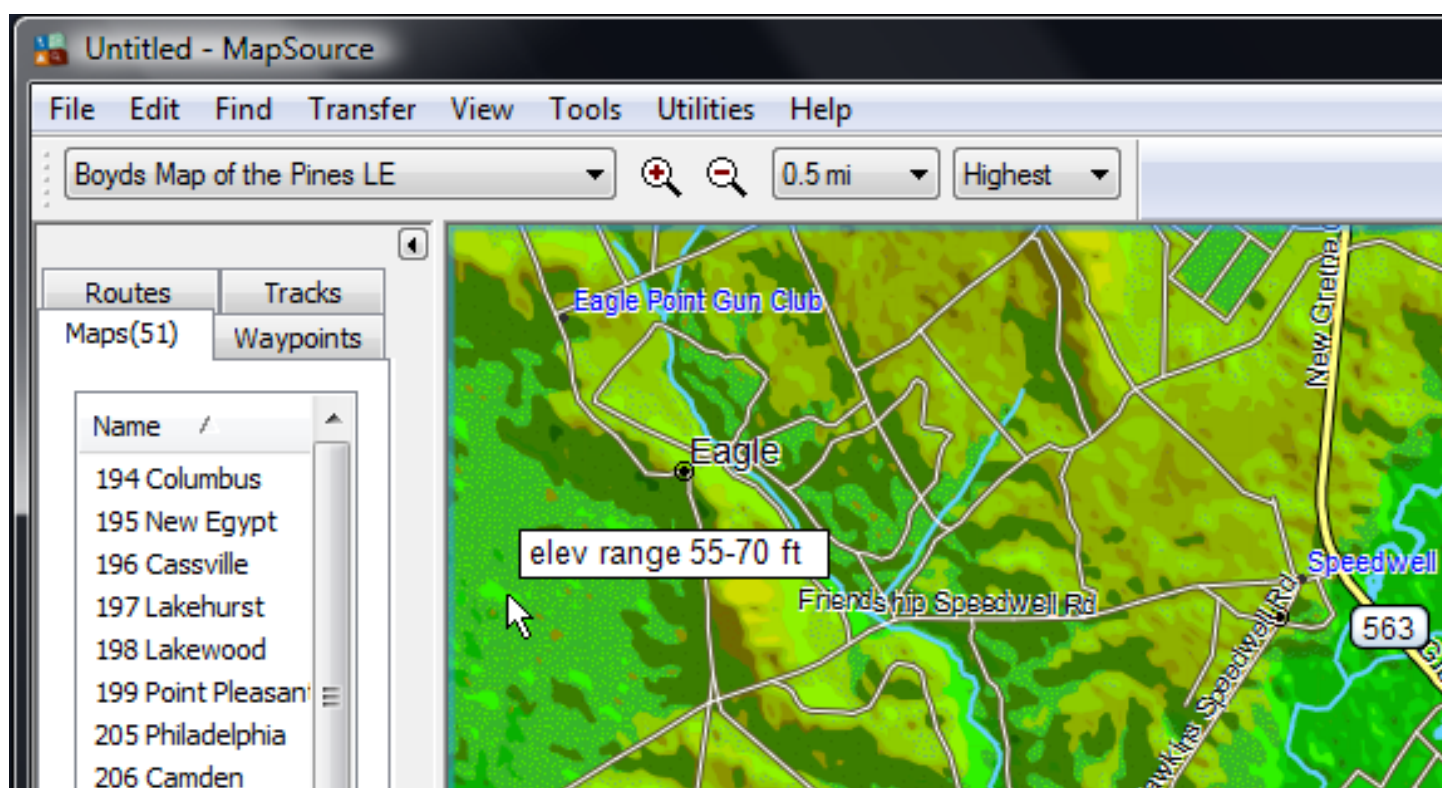
nuvi 205



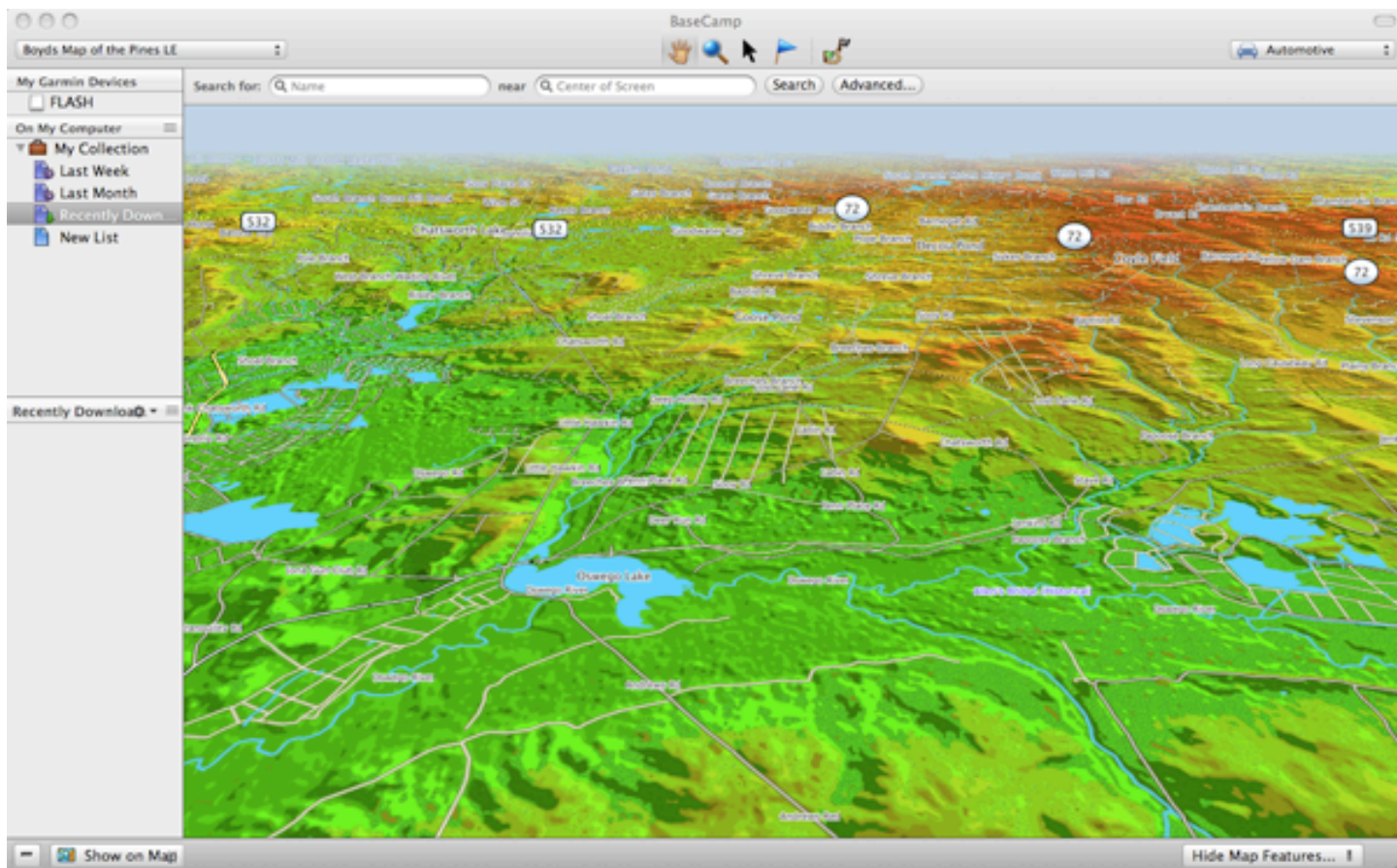
GPSMap 60csx



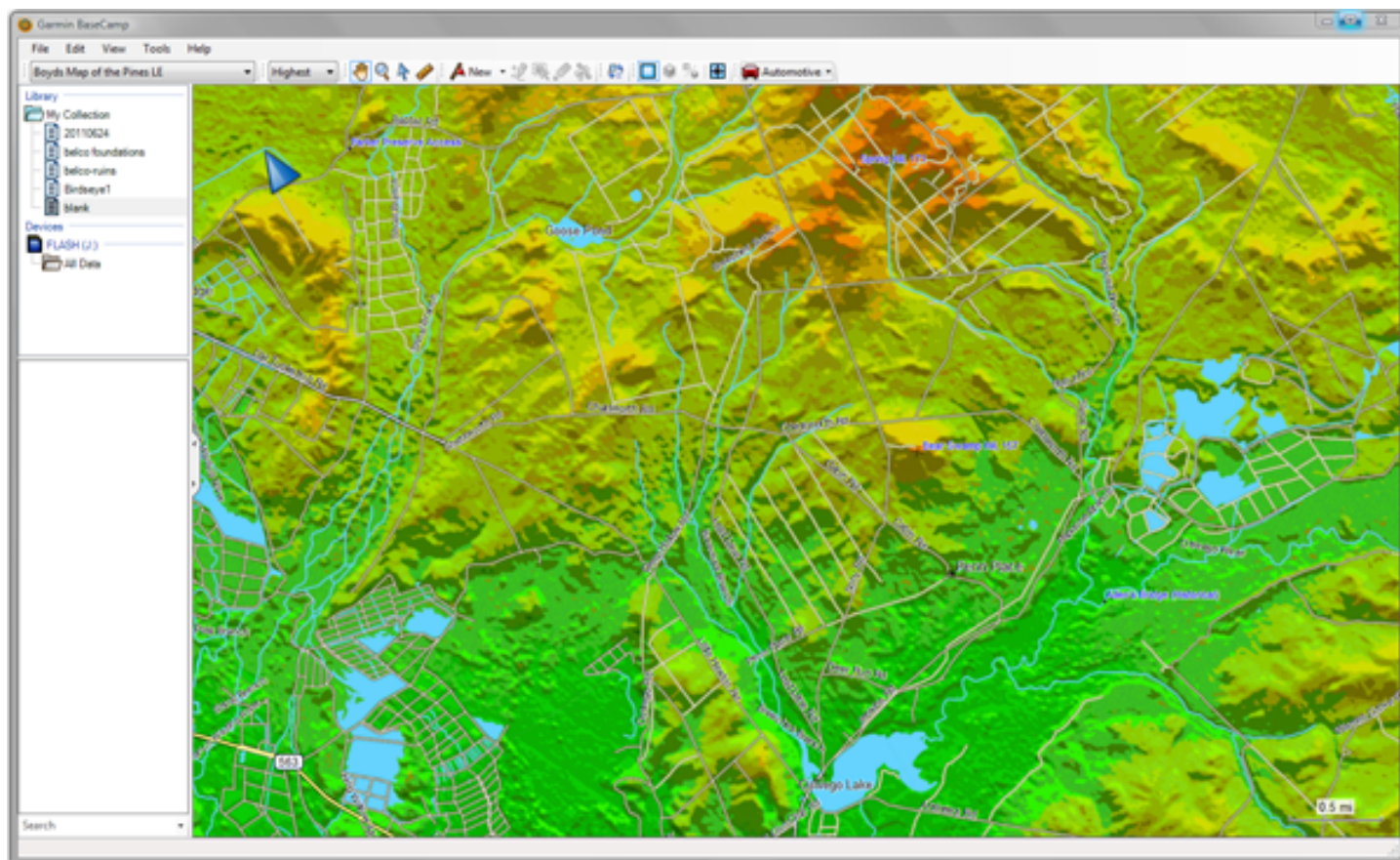
Approximate elevation scale



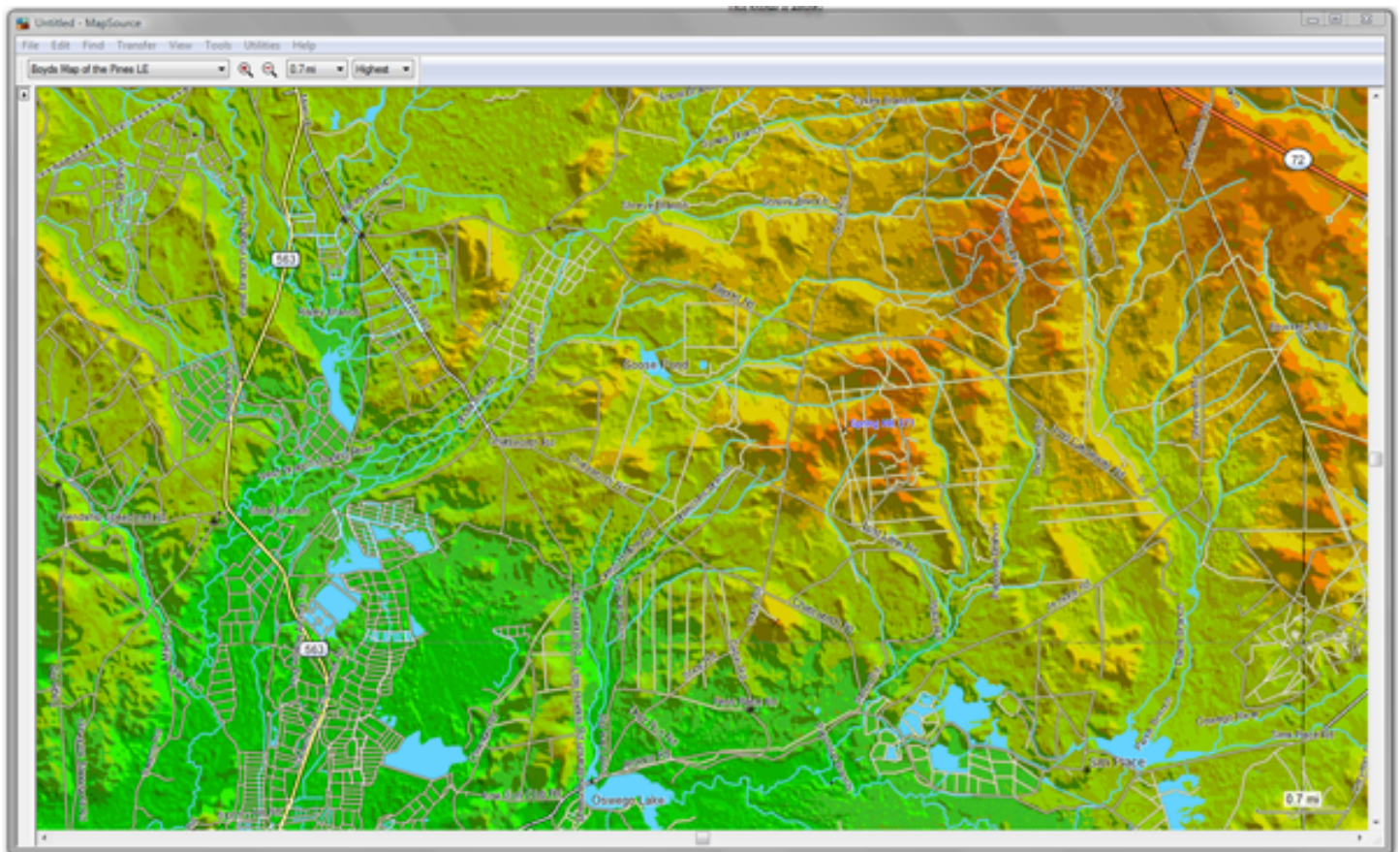
Approximate elevation is displayed at cursor position



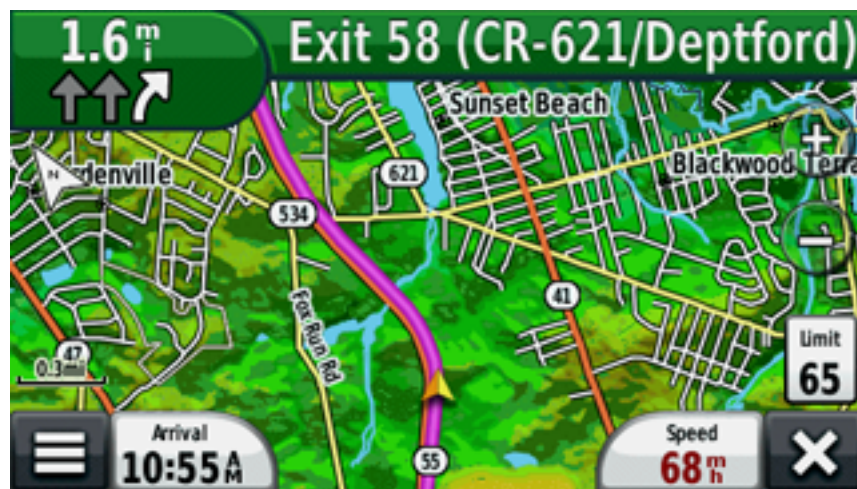
Macintosh Basecamp



Windows Basecamp



Mapsource



Displays guidance info on map when used with
Garmin City Navigator® on compatible devices

Important Technical Note

Although this map has been tested on a variety of devices, the very high level of detail might cause issues on some units. For this reason, please load this map on a memory card for testing if possible instead of installing in internal memory. In the unlikely event that the map causes your GPS to become unresponsive, you can simply remove the memory card to correct the problem. After confirming that the map works properly on your device, it is suggested that it then be installed in internal memory if available. You may notice a significant improvement in performance when the map is installed in internal memory, due to the speed at which data can be accessed.

Compatibility

Windows XP, Windows Vista, Windows 7

- Garmin Basecamp 2.08 or newer
- Garmin Mapsource 6.14.1 or newer

MacOS X 10.4 or newer

Garmin Basecamp 2.1.2 or newer

Installation

Windows

First, install Garmin Basecamp unless Mapsource is already installed on your computer. Basecamp is available at http://www8.garmin.com/support/download_details.jsp?id=4435

After downloading, right-click the .zip file and choose "Extract All...". Double-click the file named *Windows Installer.exe* and follow the instructions. The maps will now be available for viewing in Basecamp or Mapsource, where they may also be sent to your GPS device.

To remove the map from your computer, use the *Programs and Features* control panel (Windows 7 and Vista) or *Add/Remove Programs* (Windows XP). Select *Boyd's Map of the Pines LE* from the list of programs and click the Uninstall button.

Macintosh

First, install Garmin Basecamp if it is not already on your computer. Basecamp is available here (MacOSX 10.5.8 or newer req'd): http://www8.garmin.com/support/download_details.jsp?id=4449

For older versions of MacOSX, use this version of Basecamp:
http://www8.garmin.com/support/download_details.jsp?id=4939

It is important that you install Basecamp *before* attempting to install this map or the downloaded file will not be correctly recognized. After downloading, double-click the .zip file to extract the compressed files. Double-click the file named *Boyd's Map of the Pines LE.gmapi*. Follow the prompts for Garmin MapManager to install the map. After installation the map can be viewed with Basecamp and sent to your GPS device with MapInstall.

To remove the map from your computer, run the Garmin MapManager program (found in your Applications folder). Select *Boyd's Map of the Pines LE* and choose File > Delete Map.

Data Sources

This map uses the same road, trail, hydrology and POI data as *Boyd's Map of New Jersey 2012*. A partial list of data sources follows

Guy Thompson's Pine Barrens Points of Interest
NJDEP State Forest Trail Maps
NJDEP Placenames
NJDOT County Map Series
USGS National Elevation Dataset 1/3 arc-second DEM
USGS National Elevation Dataset 1/9 arc-second LIDAR DEM
USGS National Hydrology Database
US Census Bureau TIGER/Line® Shapefiles
US Census Bureau GNIS Place Names

Boyd's Map the Pines LE License Agreement

Please read this license carefully. By installing this map on your computer and/or GPS device, you are agreeing to all of its terms. This map is copyright © Boyd Ostroff, 2012.

*You are permitted to install this map on any computers or GPS devices that you own for personal, non-commercial use. You may also redistribute this map for non-commercial purposes provided that all files contained in the distribution folder, including this agreement, are included. You may not include this map or any part of it as part of a commercial product for sale. You may not create derivative works from the data in this map. **Any use of this map for purposes other than those described above requires the written consent of the author.***

This software is provided 'as-is', without any express or implied warranty. In no event will the author be held liable for any damages arising from the use of this software.

No claims are made as to the accuracy of the data contained in this map and the user assumes all risks associated with its use. This map is intended for reference, educational and recreational purposes only. The author will not be held responsible for any inaccuracies and no responsibility is assumed for damages or other liabilities due to the accuracy, availability, use or misuse of the data presented.

*Boyd Ostroff
ostroff@stephencreek.com*

Garmin®, MapSource®, BaseCamp® and City Navigator® are registered trademarks of Garmin, Ltd. or its subsidiaries.